

# Movements and habitat utilisation of Freshwater Sawfish (*Pristis microdon*) and Northern River Sharks (*Glyphis* sp. C) in the western Kimberley, Western Australia

Whitty, J.M., Morgan, D., Thorburn, D.C., Peverell, S., Simpfendorfer, C.



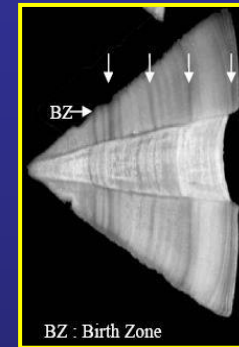
Mark  
Recapture



Satellite  
tracking



Acoustic  
tracking



Sr/Ca ratios



<http://www.abc.net.au/catalyst/stories/s2043601.htm>