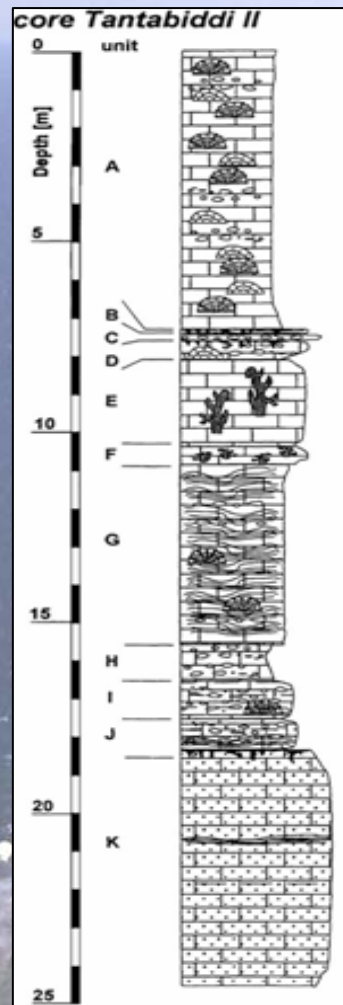
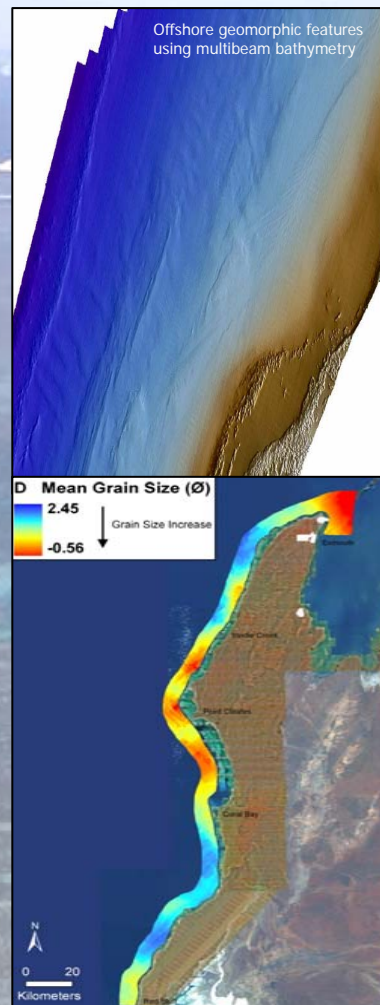


Geomorphology, Surficial Sediments and Habitats of the Continental Shelf and Reef System of Ningaloo (WAMSI Project 3.4 and 3.1.1)

Emily Twiggs and Lindsay Collins, Department of Applied Geology
Curtin University of Technology



Growth history and ancestral morphology



Contemporary geomorphology and sedimentology



Habitats and communities