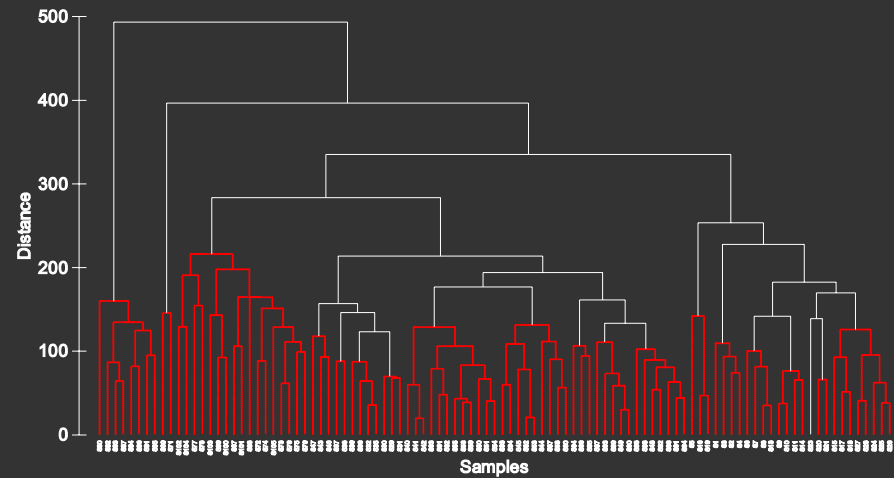


Nearshore habitat classification

Dr Fiona Valesini, Prof. Ian Potter, Michelle Wildsmith, Mathew Hourston, Natasha Coen & James Tweedley

Objective: Develop a quantitative & readily usable approach for classifying nearshore habitat types in SW Australian estuaries.



	S1	S2	S3
midline dist.	767.6746	925.3414	1353.707
mef_dir9	268.6115	267.3651	430.949
mef_N9	72.48459	363.3367	8.521844
mef_E9	298.8362	0	0
mef_S9	307.0477	14.36433	156.9126
mef_W9	0	303.8931	432.1855
med2mC9	67.7629	30.57451	154.666
slope	3.554571	4.657207	0.491569
%veg.	62.7082	86.84073	70.02772
%rock	0.07604	0.876953	0
%snags	0	0	0
%reeds	0	0	0
%bivalve beds	0	0	0

