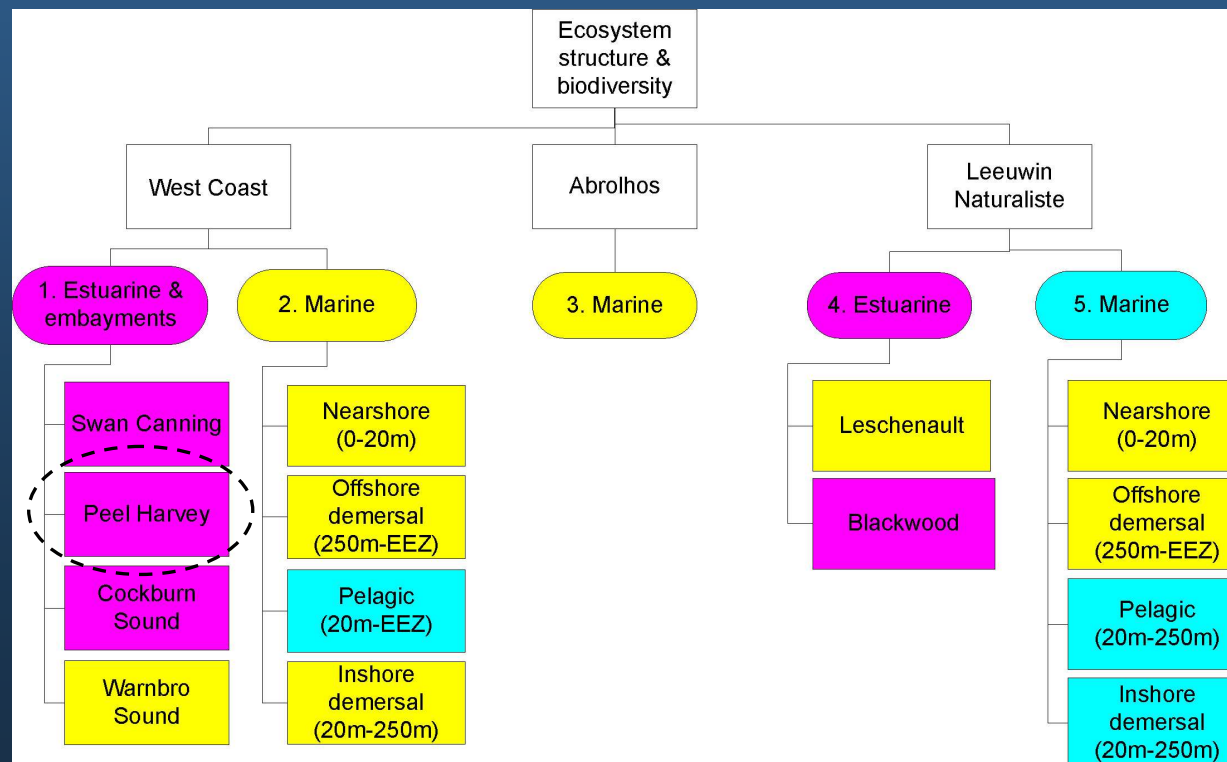
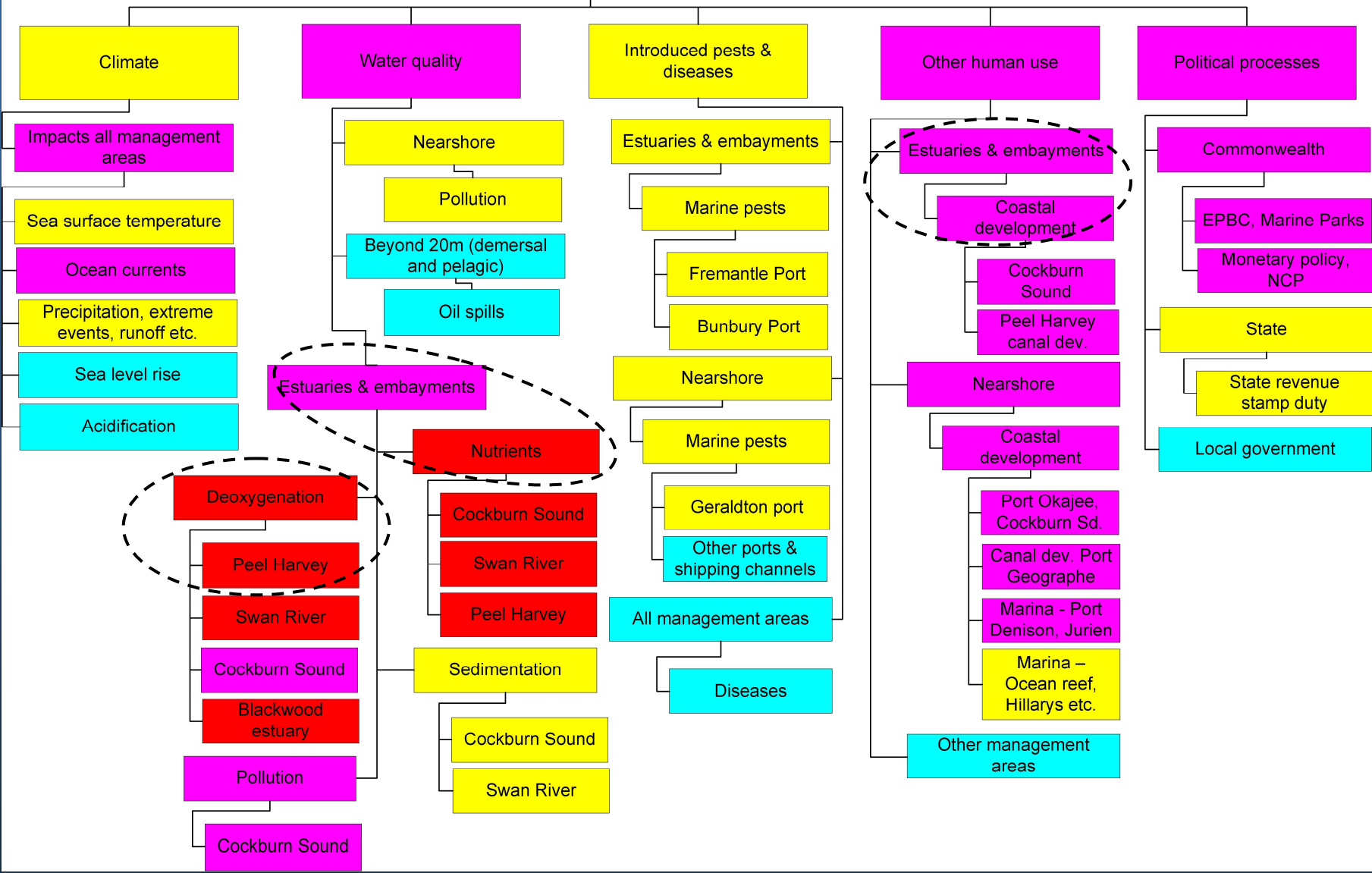


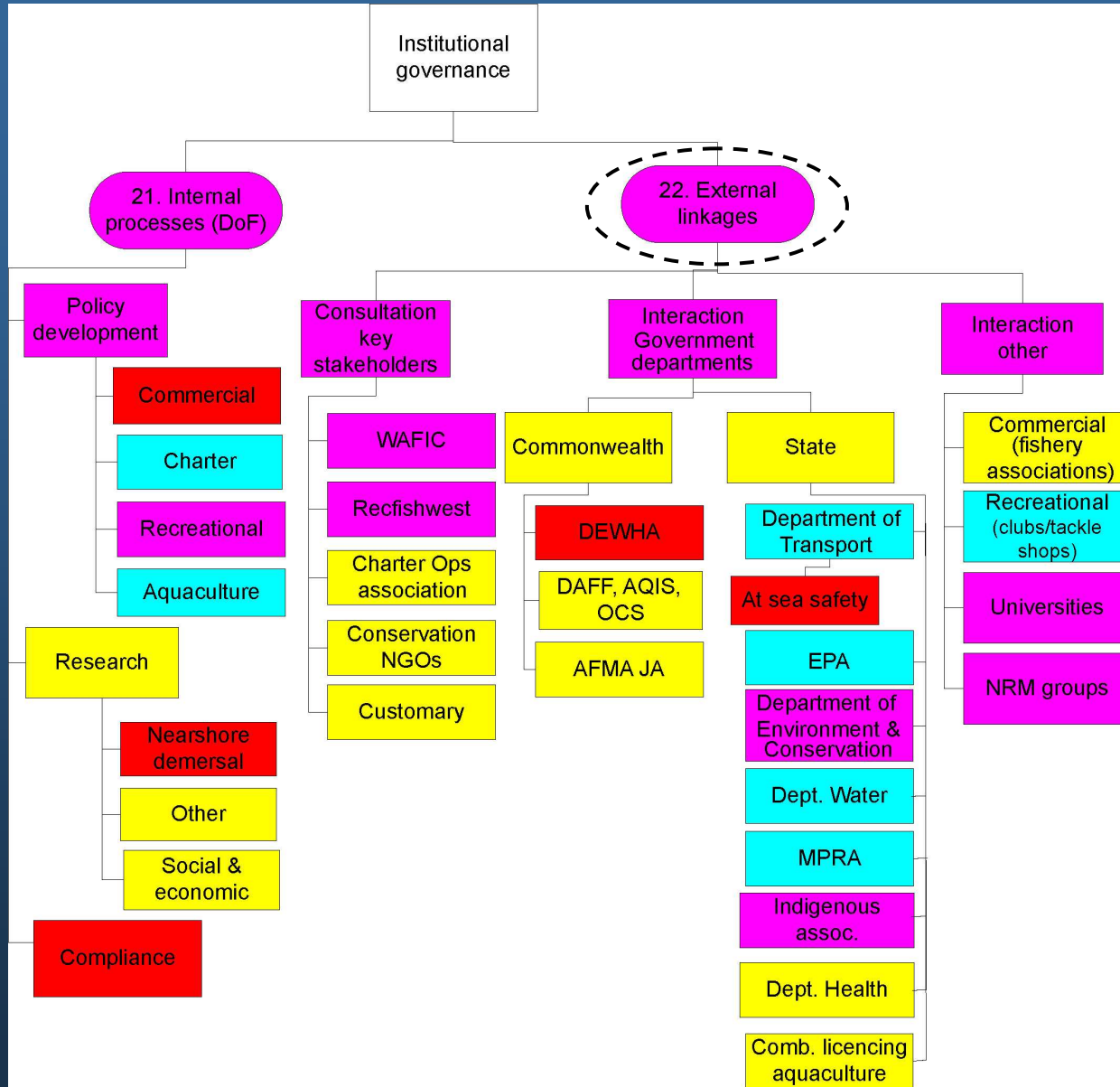
4.3.2 Ecosystem models for the Peel Harvey estuary

Assets and issues of relevance in the Peel Harvey models



General external drivers





Relevant findings + potential management improvements

Modelling still underway (workshops held in April)

Expected findings

- Key drivers of change in the Peel Harvey
 - Recreational water quality
 - Wading birds
 - Blue swimmer crabs
 - Governance
- Alternative management strategies for these assets
 - assess stability for various strategies and impacts of management links on key drivers