



# Marine Science in WA 2010 Show-&-Tell

Name: Alexandra Stevens

Affiliation: Curtin University

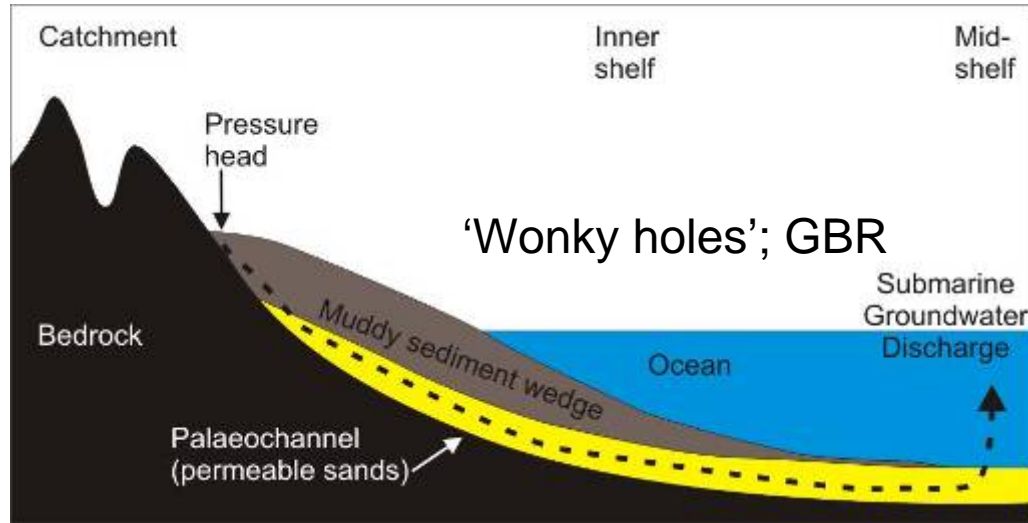
Collaborators: WAMSI, Lindsay Collins

Newsflash title: Assessment of Groundwater  
impacts on the Ningaloo Reef system

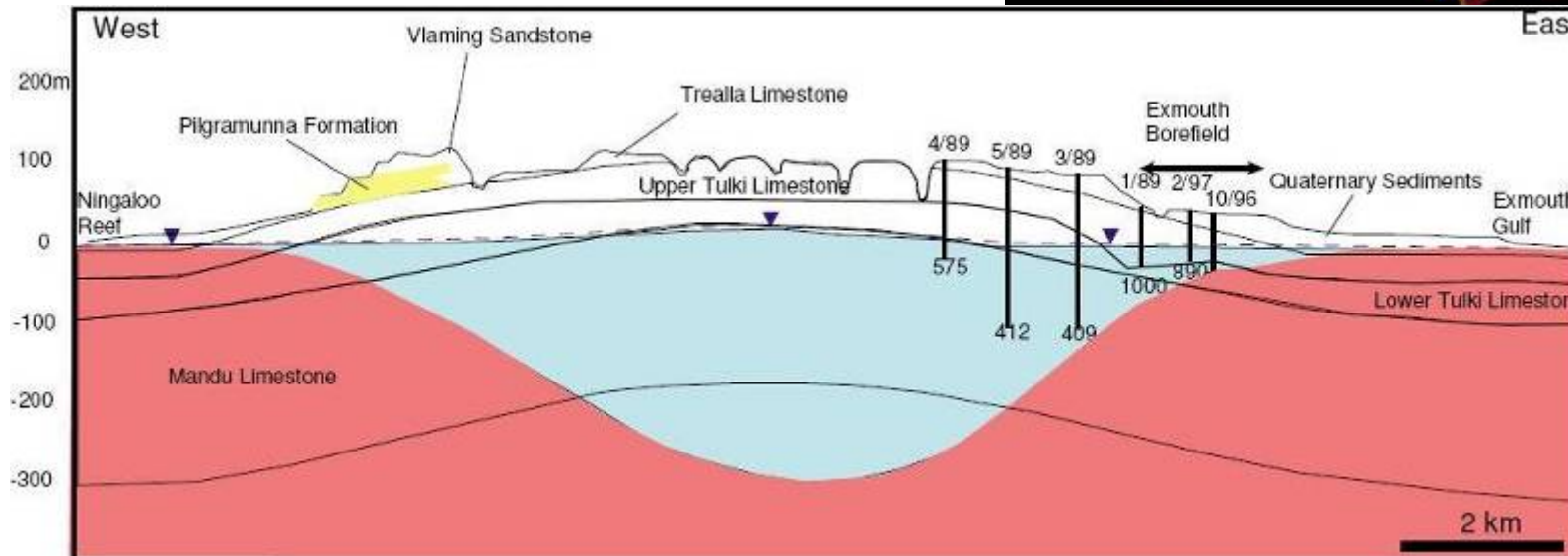
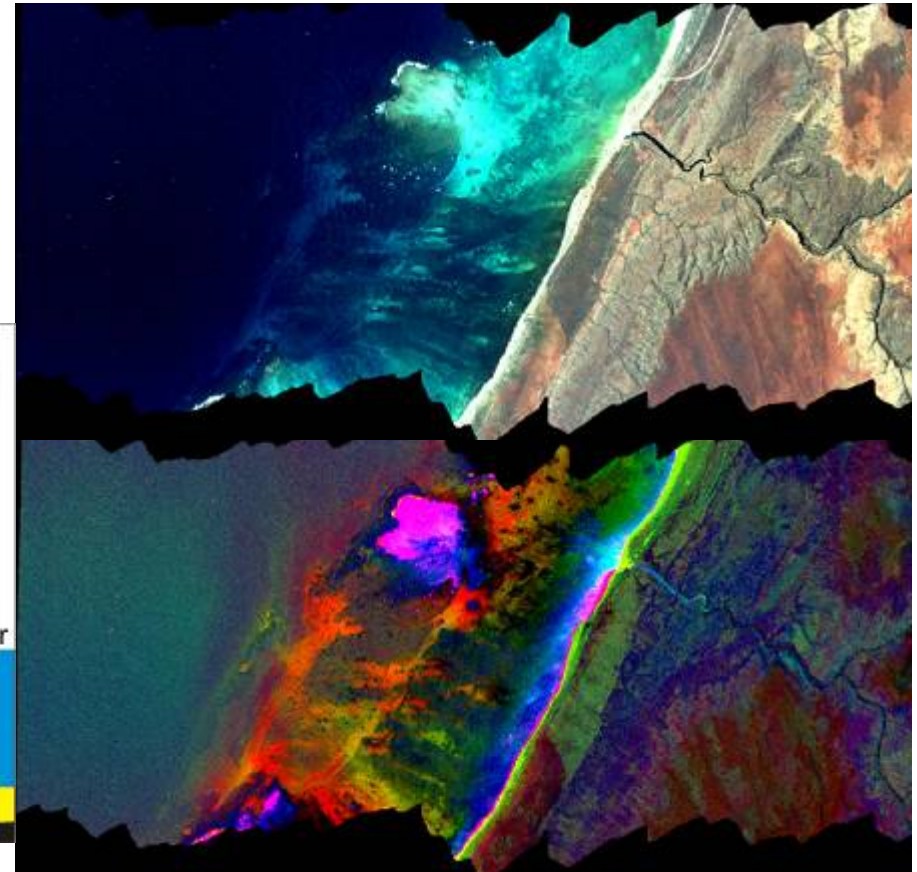


# Assessment of Groundwater impacts on the Ningaloo Reef system.

Lindsay Collins & Alexandra Stevens, Curtin University. WAMSI Project 3.10



‘Wonky holes’; GBR



Hymap Imagery

Groundwater Model