



# Marine Science in WA 2010 Show-&-Tell

Name: Emily Twiggs

Affiliation: Curtin University

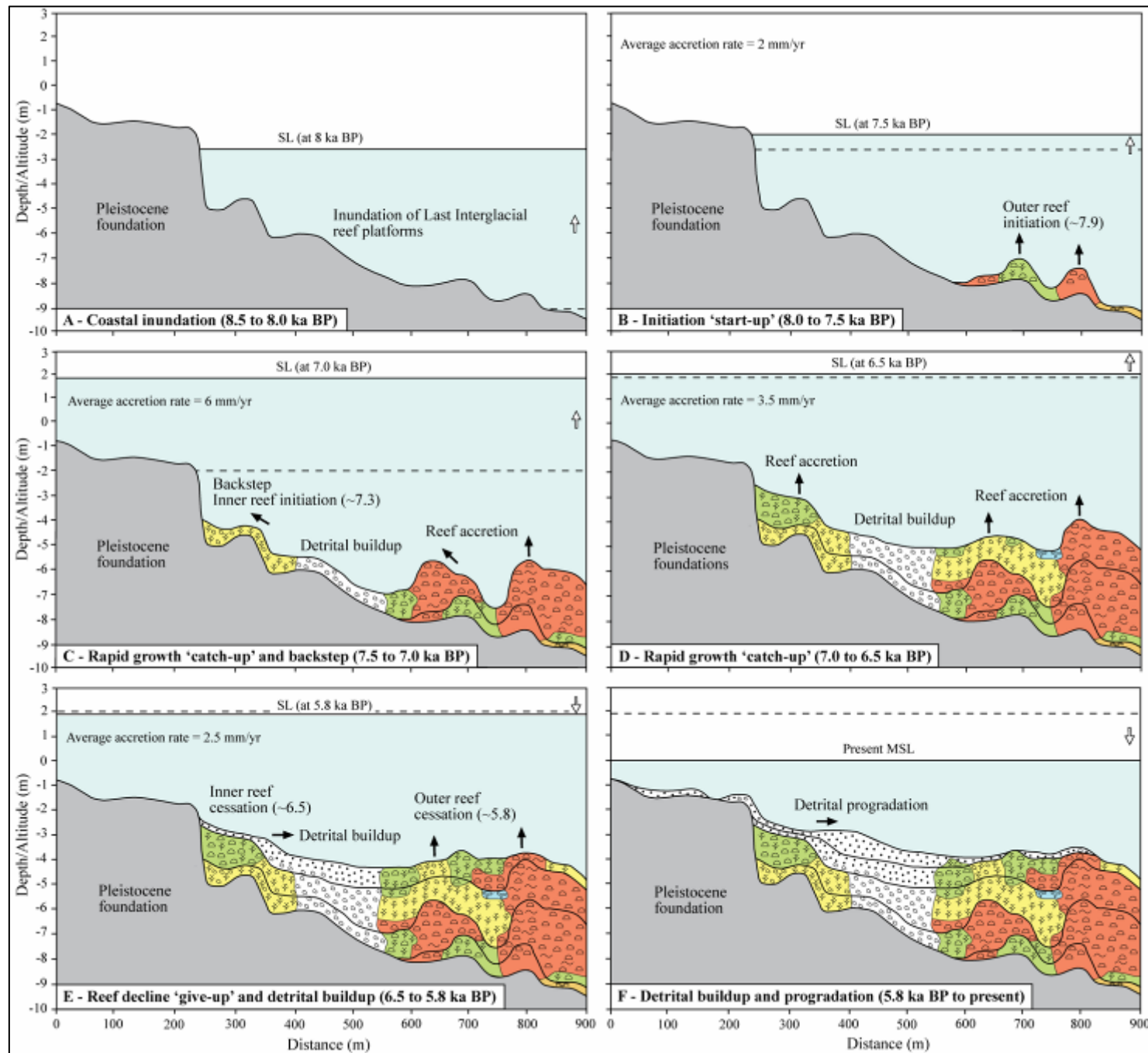
Supervisor: Lindsay Collins

Collaborators: WAMSI, AIMS, Sira Tecchiato, Ben Fitzpatrick

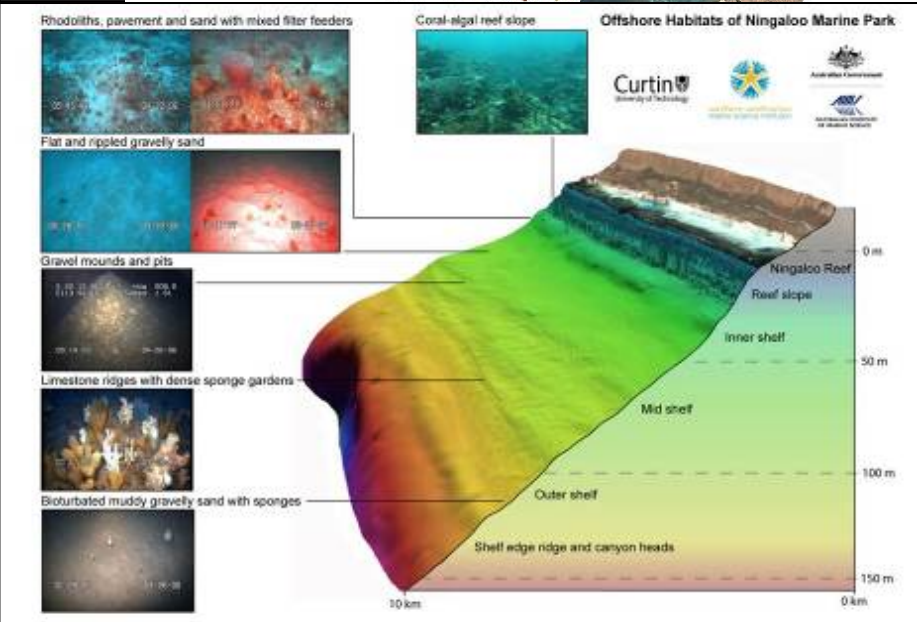
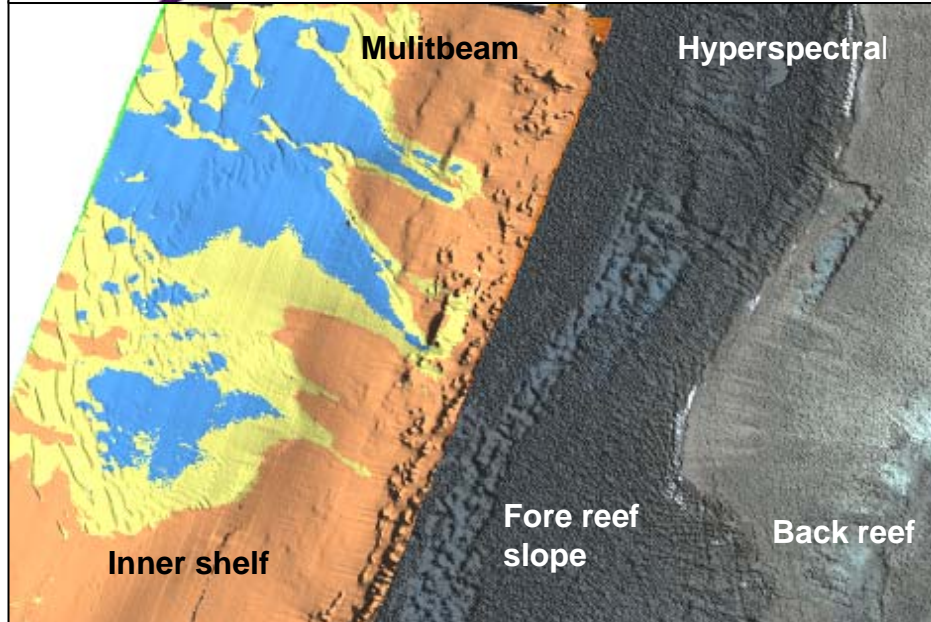
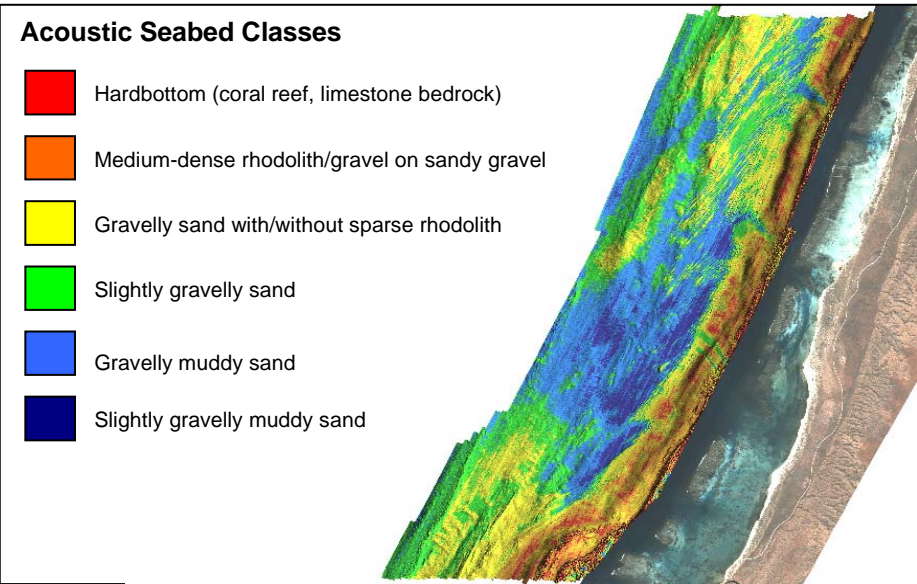
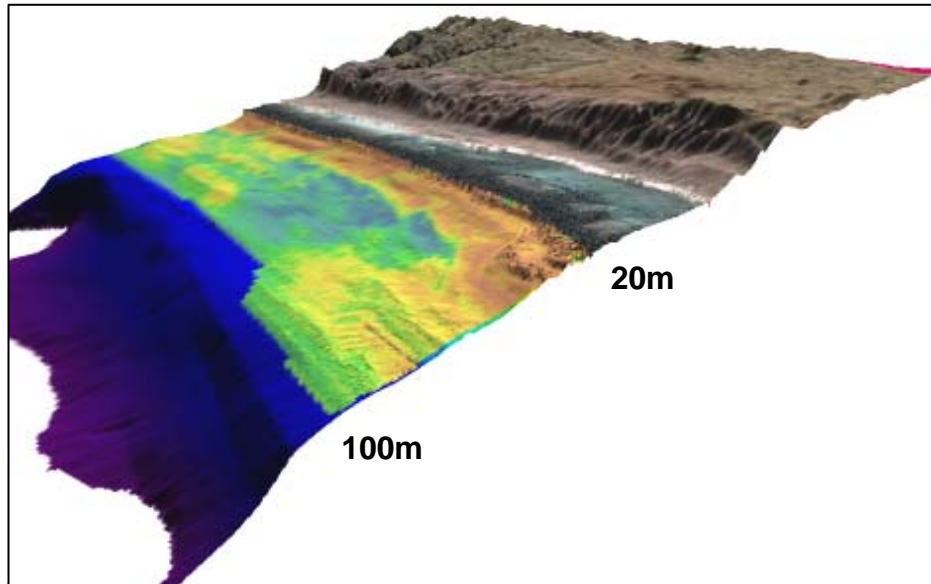
Newsflash title: Geomorphic and sedimentary environments for conserving Ningaloo's biodiversity



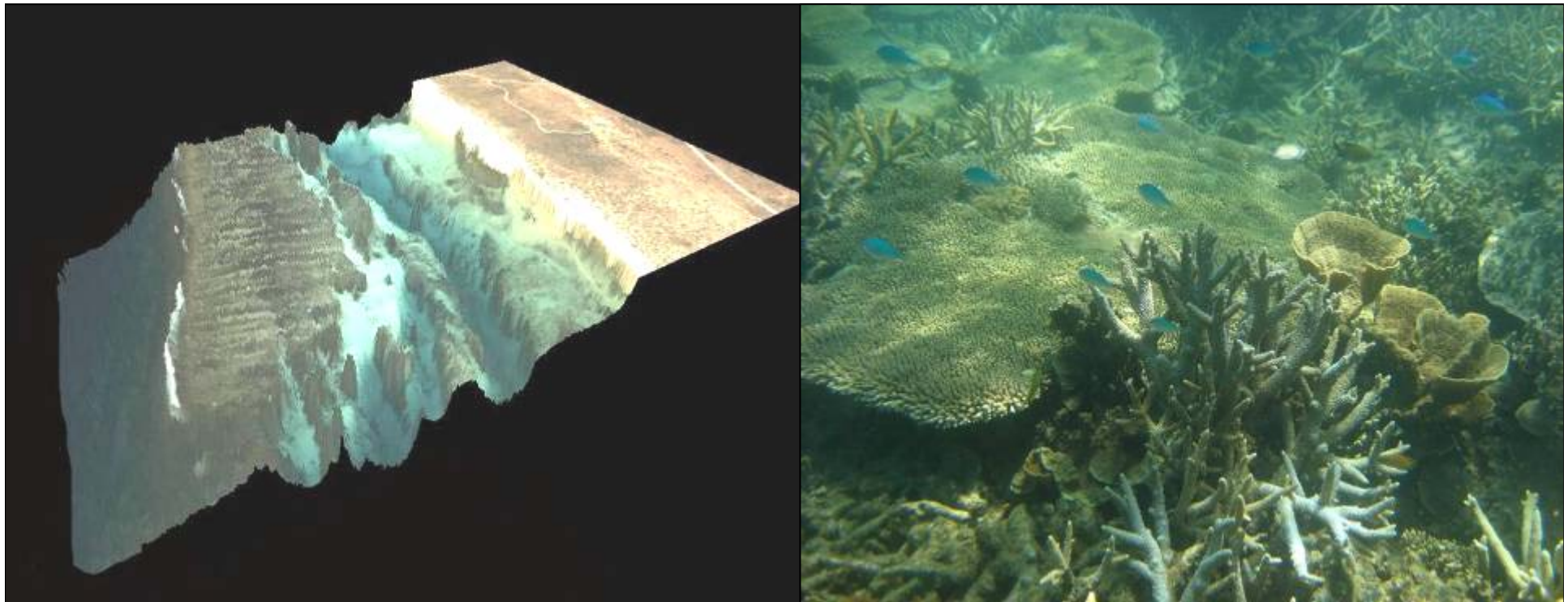
# 1) Growth history of Ningaloo Reef (climate change analogue)



1) Growth history of Ningaloo Reef (climate change analogue)  
 2) **Geomorphology, sedimentary environments and associated habitats of the offshore Ningaloo continental shelf**



- 1) Growth history of Ningaloo Reef (climate change analogue)
- 2) Geomorphology, sedimentary environments and associated habitats of the offshore Ningaloo continental shelf
- 3) Geomorphic zonation and influence on habitat and coral community structure of the shallow inshore Ningaloo Reef system**



- 1) Growth history of Ningaloo Reef (climate change analogue)
- 2) Geomorphology, sedimentary environments and associated habitats of the offshore Ningaloo continental shelf
- 3) Geomorphic zonation and influence on habitat and coral community structure of the shallow inshore Ningaloo Reef system
- 4) **Carbonate sediments and assemblages of the Ningaloo Marine Park**

