



# Marine Science in WA 2010 Show-&-Tell

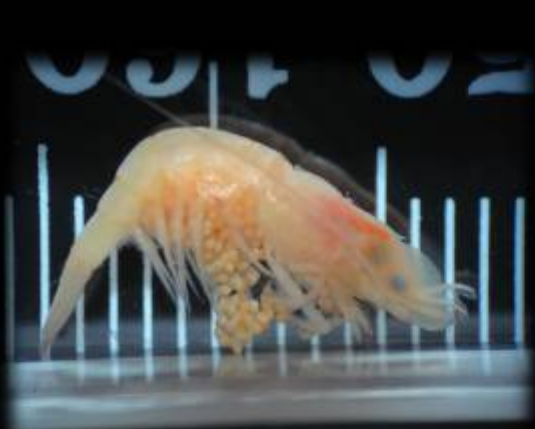
**Name: Christine Parfitt**

**Affiliation: Curtin University**

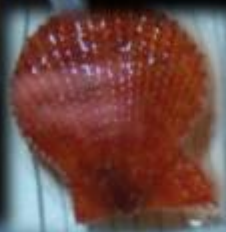
**Supervisors: Glen Whisson**

**Newsflash title: The influence of seagrass beds on resident macroinvertebrates in artificial habitat collectors in Geographe Bay, WA**





Targeting cryptic and nocturnal macro-invertebrates for biomonitoring



Seagrass recruitment



Artificial habitats consisting of hard and soft mesh components

Influence of seagrass and conditioning time on resident macroinvertebrates

