



SOUTH WEST OVERVIEW

Gary Kendrick
UWA





THE UNIVERSITY OF
WESTERN AUSTRALIA
Achieving International Excellence

South West Overview

Gary Kendrick
The UWA Oceans Institute

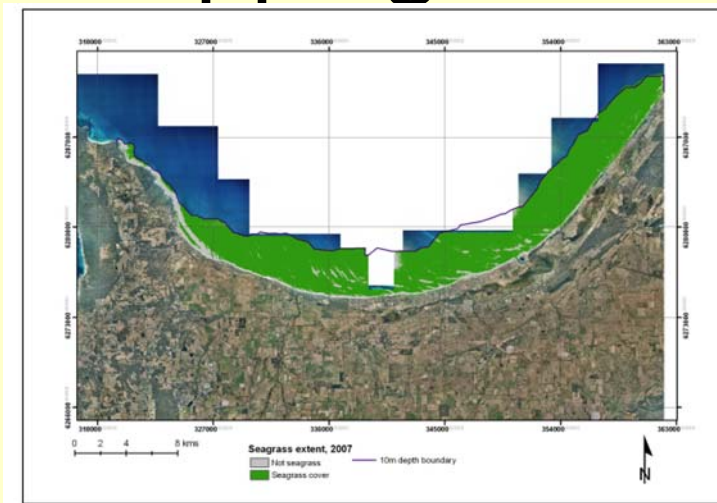


Outline

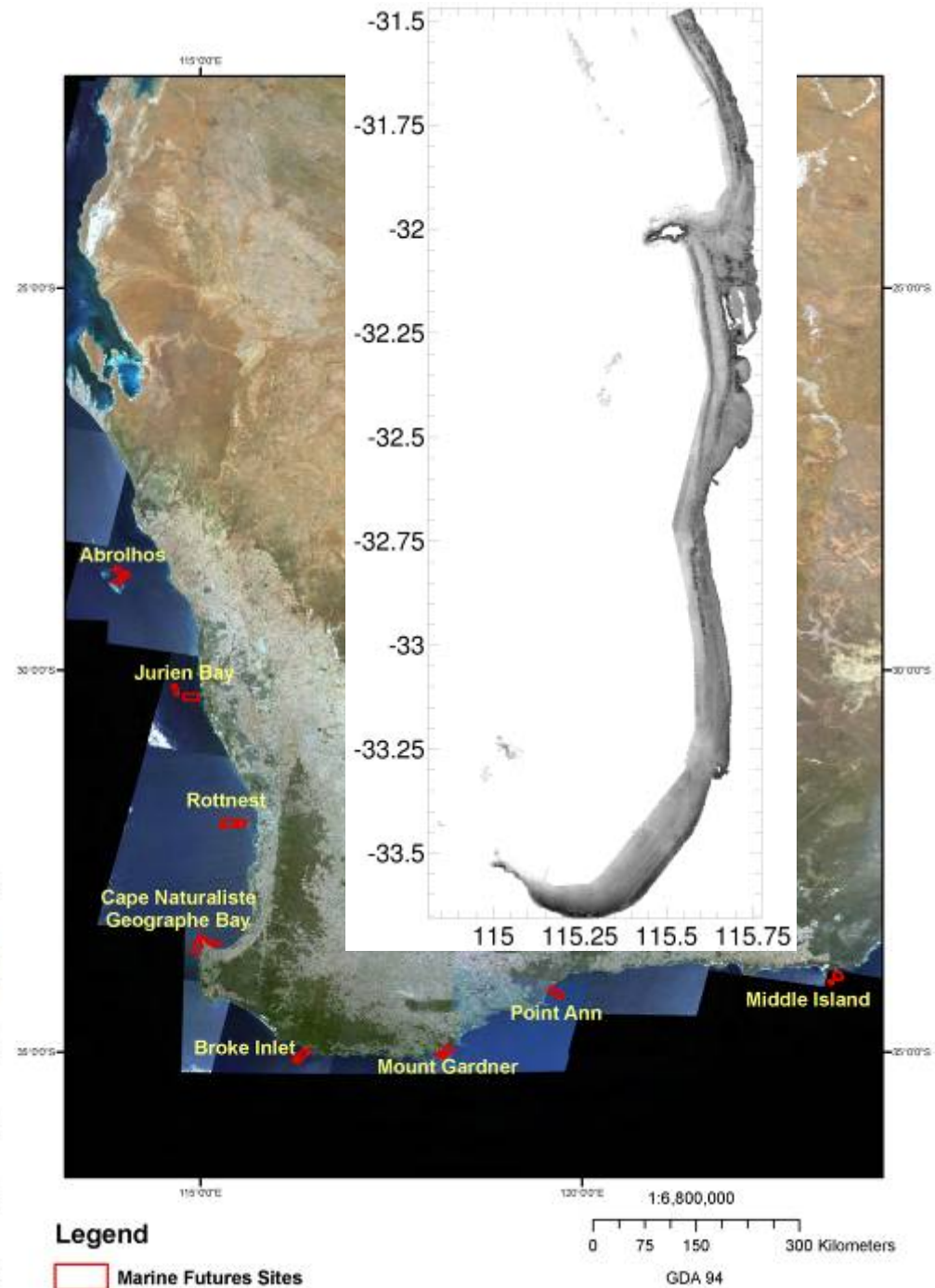
- The SW – a jewel in the state crown
 - Environment
 - Tourism
 - Recreation
 - Surfing
- Science Overview
 - Resource Mapping
 - Benchmarking
 - Ecological Process Studies
- Social/Historical/Economic studies
- Needs



Resource Assessment - Mapping studies



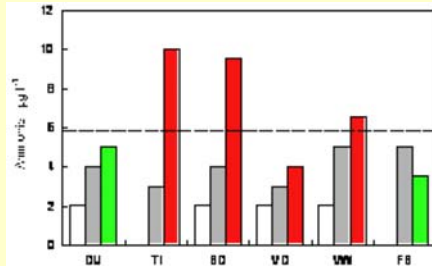
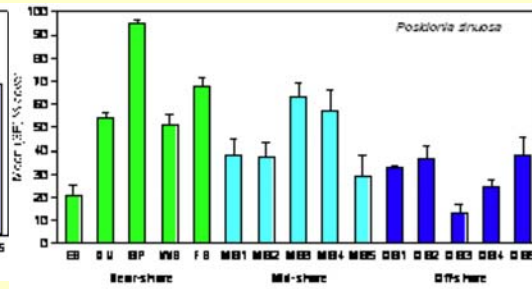
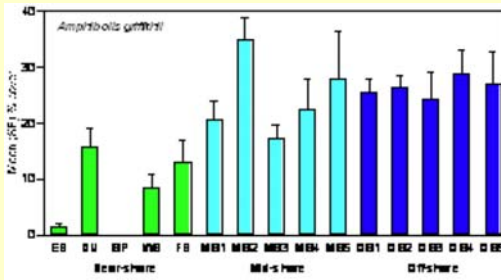
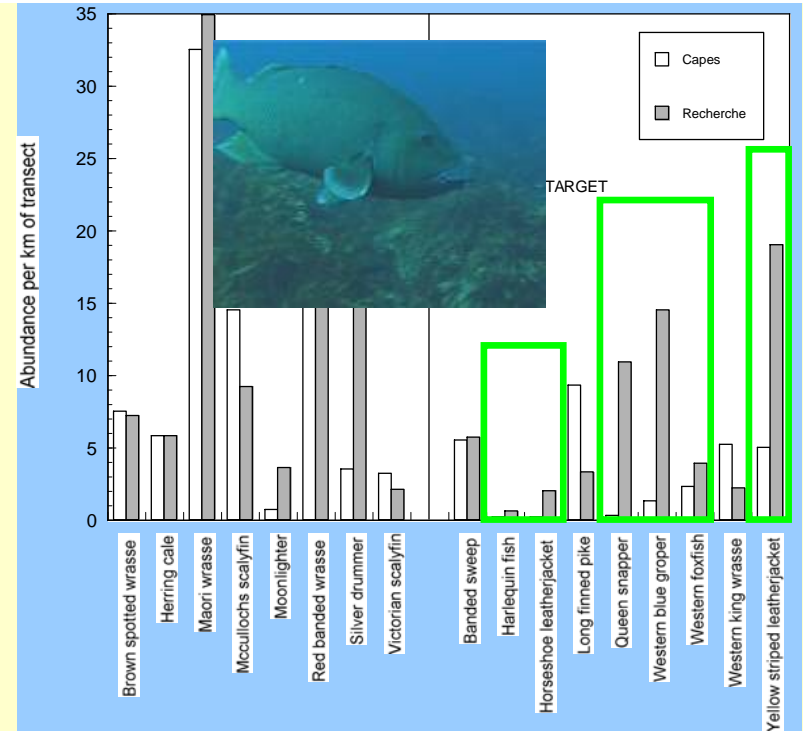
- A sample of projects:
 - WA Marine Futures
 - SWCC Seagrass Mapping project
 - WA DPI Coastal LIDAR survey (FUGRO LADS)
 - SWAN CC (Murdoch) Metropolitan Perth Mapping



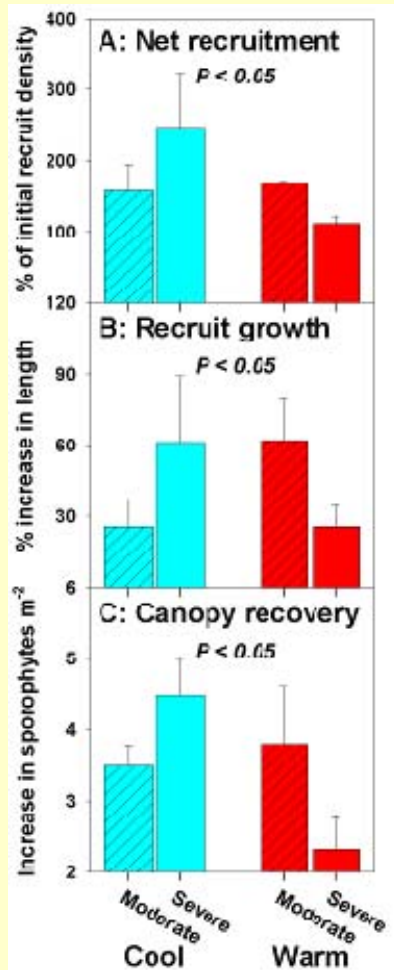


Benchmarking Studies

- A sample of projects:
 - SRFME-CSIRO Coastal Programme – Jurien to Bunbury
 - SWCC Seagrasses of Geographe Bay
 - SWCC Capes reef studies
 - WA Marine Futures – diversity assessments in deeper waters
 - WAMSI 4.2 – West Coast EBFM Indicators (Smale, Langlois)

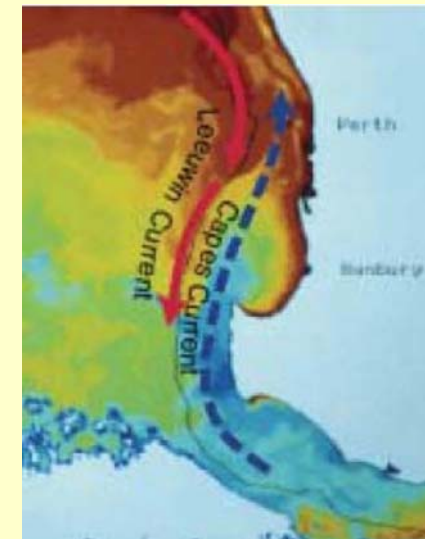


Ecological processes



A sample of projects:

- Oldham, Lavery, Pattiaratchi- (UWA-ECU-DPI) sediment and seagrass wrack build up at Port Geographe
- Thomas Wernberg – (ECU) Climate Change impacts on the resilience of kelps in Western Australia
- Margie Mohring – (UWA) effect of temperature on gametophyte development in kelps
- Kirrily White – (UWA) Fish assemblage structure in seagrass meadows of Geographe Bay
- **Christine Parfitt** (Curtin) – Seagrass - invertebrate links
- Myself – Disturbance and recovery in kelp forests (Hamelin Bay)



Historical/Social/Economic Studies



- A sample of projects:
 - SWCC Oral History of Fishing in the Capes- Geographe Bay region
 - “It seemed to be quite unusual in the early days to catch really small dhufish, which would now be undersized by regulation, but these days the people that come here and go fishing, they quite often say, ‘We caught three dhuies today, but had to let them all go’, and that’s the general story.”
 - WA Marine Futures Economic and social assessment of marine resources of the South West
 - Fisheries Management changes. e.g. From July 1, 2009, a permanent closure of Geographe Bay to salmon fishing and beach seine fishing.
 - **Joseph Christensen** (Murdoch) – Socio-economic assessment of fisheries
 - **Calais Tink** (Murdoch) – Interactions between recreational fishers, fish and management

Needs

- Continued research extending our ecological **process** understanding of the region
- **Integration** and **analysis** of the existing knowledge base
- Integration of **science with society and policy**
- **Political action** on regional issues
 - Increased urbanization of coastal regions
 - Impacts to marine environment
 - Declaring the Capes Marine Park



Capes-Geographe Bay-Hardy Inlet Marine Park??

- Management Plan completed and sent to Ministers 2006
- No action since then?
- Why?

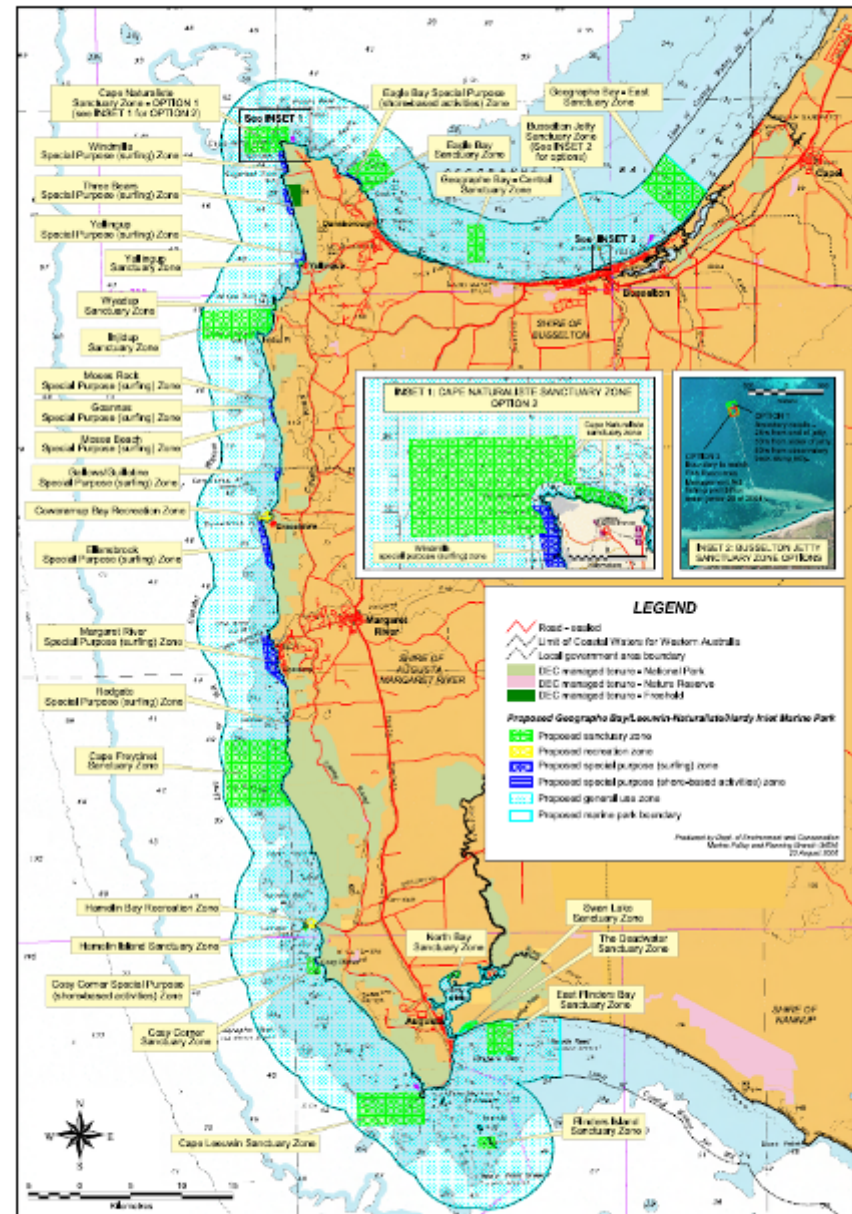


FIGURE A: Overall proposed zoning scheme for the marine park.